

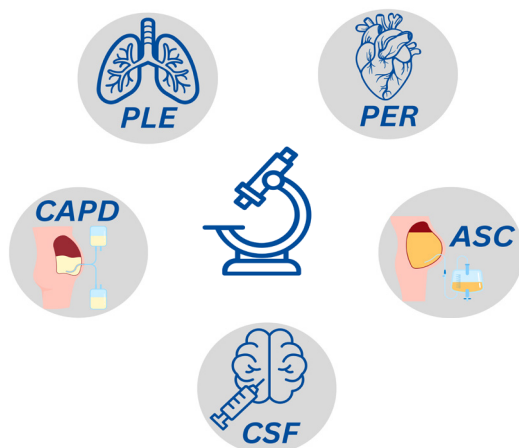
# Urilyzer<sup>®</sup> Cell - Body Fluid measurement

- Research Use Only -



Body Fluid Measurement mode is a new software feature on the Urilyzer<sup>®</sup> Cell which is available only in RUO mode (Research Use Only).

The measurement mode enables different body fluids (Cerebrospinal fluid - **CSF**, Ascitic fluid - **ASC**, Pleural fluid - **PLE**, Pericardial fluid - **PER**, Continuous Ambulatory Peritoneal Dialysis - **CAPD**) to be analyzed in two measurement steps.



## Workflow

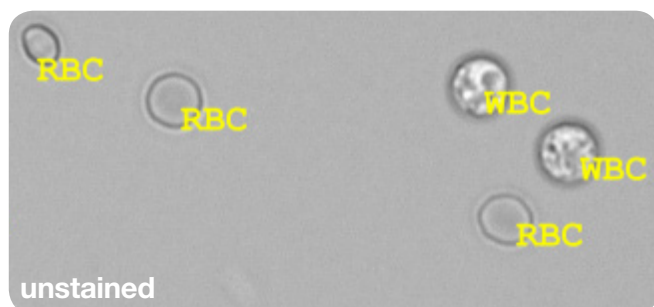


### Step 1:

#### Measurement of native body fluid sample

First the unstained sample is measured to determine:

- Red blood cells (RBC, p/ $\mu$ L or p/HPF, quantitative)
- White blood cells (WBC, p/ $\mu$ L or p/HPF, quantitative)



**Analyticon Biotechnologies GmbH**  
Am Muehlenberg 10  
35104 Lichtenfels - Germany  
Phone: +49 6454 7991-0  
info@analyticon-diagnostics.com  
www.analyticon-diagnostics.com

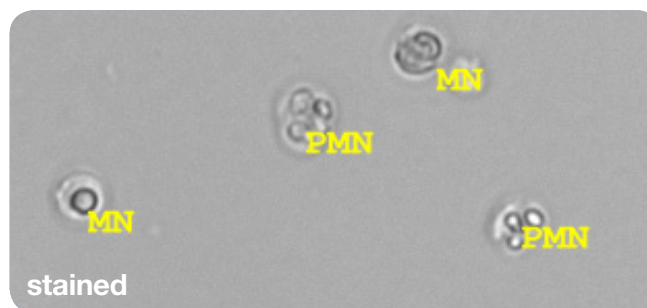


### Step 2:

#### Measurement of stained body fluid sample

In the second measurement step the stain is manually added to the sample in a ratio of 1:1 (no incubation time) to determine:

- Mononuclear white blood cells (MN%, differential)
- Polymorphonuclear white blood cells (PMN%, -differential)
- Other nucleated cells (ONC, p/ $\mu$ L or p/HPF, semi-quantitative).



The staining causes lysing of the red blood cells and highlights the nucleus of the WBCs to enable detection of the WBC subcategories (MN, PMN).

## Body Fluid stain



**Art.-No. : BFS-9901-1**

4 x 15 mL staining (Türk type solution)  
Storage conditions: 2°C - 35°C  
Shelf life: 24 months